

Jobs | Regional | Renewable | Carbon friendly| Innovative | Value added

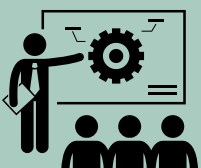
INDUSTRY REQUIREMENTS FOR GROWTH



Resource Security



Supply Chain & Manufacturing Competitiveness



Skills & Training

MAJOR LOCAL EMPLOYERS

- HQ Plantations
- DTM Timber / Branch 95
- Robertson Brothers Sawmill
- Mary Valley Timbers
- Managed Native Forests (public sector)
- Private Forestry Service Queensland
- GMT Logging
- Laminex
- Superior Wood

Queensland's timber industry is the state's third most valuable agricultural processing industry. We have a strong value chain footprint, with wood processing and timber manufacturing accounting for around 70% of the 11,600 direct timber industry jobs.